

EXPERT IN PNEUMATIC & ELECTRIC TAPPING MACHINES

Automatic Chamfering Machines
Drill Bit & End Mill Grinding Machine
Bench Vises and Related Accessories



Bengbu Sanford Machinery Co.,Ltd
ADD: 3/F Guzhen E-Commerce Industrial
Park, Bengbu, Anhui, China
Tel: +86-552-2132858
Fax: +86-552-2132859
Email: sales@sanford-machine.com
Post Code: 233700



Wechat



Whatsapp

BENGBU SANFORD MACHINERY CO.,LTD

C ONTENT



COMPANY PROFILE

With over 20 years' experience in supply and manufacturing metalwork machines, Bengbu Sanford Machinery Co., Ltd offers comprehensive product range in the machinery industry, including Electric & Pneumatic Tapping Machine, Chamfering Machine, Grinding Machine, Bench Vise, Sparking Machine and relevant accessories.

Following Sanford's mission, "making your metalwork easier and safer", we have constantly devoted ourselves to adopting new technology, new processing technic, new equipment and new materials to improve products' quality and performance, reach the target to reduce processing time, improve work efficiency and save human resources.

Having been in machinery industry for more than 20 years, we have served bulk customers in global countries & got lots of positive feedbacks, hundreds of customers have been satisfied with our professional "metalwork machinery solutions". By gaining high reputation in machinery field and to enhance the close partnership with customers, Sanford has developed distributors and even exclusive distributors in the world.

Nowadays, our machinery products are not only sold in domestic market, but also exported to overseas countries, especially Europe, Middle East, South East Asia, Asia, South America, and the Pacific region.

Should you have any questions at all, we encourage you to contact us for further clarification and technical assistance.

OUR CERTIFICATE



P01-P08

TAPPING MACHINE SERIES

Pneumatic Tapping Machine
Electric Tapping Machine
Electric Drilling & Tapping Machine
Automatic Scrap Blowing & Lubricating Tapping Machine
Automatic Blowing & Lubricating Tapping Machine with Built-in Oil Tank

P09-P14

CHAMFERING MACHINE SERIES

Handheld Curved & Linear Pneumatic Chamfering Machine
Handheld Curved Electric Chamfering Machine
Handheld Linear Electric Chamfering Machine
High Speed Linear Guide Chamfering Machine
High Speed Combined Linear Guide Chamfering Machine

P15-P18

GRINDING MACHINE SERIES

Automatic Industrial Sharpening Machine
Drill Bit Grinder
End Mill and Drill Bit Grinder
Universal Cutter Grinder
Universal Milling Cutter Grinding Machine

P19-P22

WISE SERIES

Super Precision Hydraulic CNC Milling Machine Vise
High Precision Rotatable CNC Milling Bench Vise
Super Precision CNC Milling Bench Vise
Super Precision Bi-directional CNC Milling Bench Vise
High Precision Universal Direction CNC Milling Bench Vise

P23-P28

OPTIONAL ACCESSORIES SERIES

Portable Tap Extractor Electric Sparking EDM Machine
Permanent Magnetic Chuck
Permanent Magnetic Base
Permanent Magnetic Lifter
Pneumatic Motor
Cast Iron Workbench
Titanium Coating Screw Tap
Over-load Protection Tapping Collet
External Threading Die Holder
HSS Threading Die

SF-900-12

Pneumatic Tapping Machine



SF-900-12



SF-900-24



3-Arm Model

Features

1. With small air pressure and volume (0.6-0.8mpa), the machine driven by compressed air can produce large torque output.
2. Applicable for various machinery manufacturing industries and various materials including copper, iron, aluminum, steel, stainless steel, plastic, wood, and other materials.
3. With high strength aluminum alloy construction, strong hardness, high efficiency, stable performance and simplified operation.
4. Overload protection feature with adjustable safety clutch to avoid tap broken.

Specifications

Model	SF-900-12	SF-900-16	SF-900-24
Tapping Capacity	M3-M12	M3-M16	M6-M24
Air Pressure	0.6-0.8mpa	0.6-0.8mpa	0.6-0.8mpa
No-load Speed	400rpm	250rpm	90rpm/250rpm
Max. Work Radius	1000mm(3-Arm: 1500mm)	1000mm(3-Arm: 1500mm)	1200mm(3-Arm: 1700mm)
Tapping Direction	Universal Direction	Universal Direction	Universal Direction
Package Size	680*280*250mm	680*280*250mm	810*740*250mm
Gross Weight	20kg / 3-Arm: 25kg	20kg / 3-Arm: 25kg	40kg / 3-Arm: 50kg
Standard Collet	GT12, M3-M12	GT12, M3-M16	GT24, M6-M24
Optional Collet	DIN371/376, ISO, JIS or other standard collets optional		

SF-1000-16

Electric Tapping Machine

A



SF-1000-16



SF-1200-36



3-Arm Model

Features

1. Servo drive controller with intelligent torque production and high definition touch screen makes it easy to operate, while its compact and durable design ensures long-lasting performance.
2. HD Touch Screen makes the operation much more convenient and flexible, can from work vertical and universal direction to complicated and cumbersome work, positioning rapidly and process accurately.
3. Manual, automatic and deep hole modes for increased flexibility and convenience to allow the user to select the most appropriate method for the task.
4. Adjustment of thread size, speed, pitch and cutting depth via touch screen on swivel arm.
5. Offers variable speed settings to accommodate different materials (steel, aluminum, plastic, etc.) and tap sizes.

Specifications

Model	SF-1000-10	SF-1000-12	SF-1000-16	SF-1200-24	SF-1200-30	SF-1200-36
Power	220V/110V AC, 50HZ, 600W			220V/110V AC, 50HZ, 1200W		
Tapping Capacity	M3-M10	M3-M12	M3-M16	M6-M24	M6-M30	M6-M36
Highest Speed	1000rpm	625rpm	312rpm	200rpm	200rpm	156rpm
Max. Work Radius	1100mm (3-Arm: 1500mm)			1200mm (3-Arm: 1700mm)		
Vertical Extension	550mm			600mm		
Tapping Direction	Universal Direction			Universal Direction		
Package Size	710*610*230mm			810*760*250mm		
Gross Weight	30kg / 3-Arm: 38kg	30kg / 3-Arm: 38kg	30kg / 3-Arm: 38kg	48kg / 3-Arm: 60kg	50kg / 3-Arm: 62kg	50kg / 3-Arm: 62kg
Standard Collet	GT12, M3-M10	GT12, M3-M12	GT12, M3-M16	GT24, M6-M24	GT24, M6-M30	GT24, M6-M36
Optional Collet	DIN371/376, ISO, JIS or other standard collets optional					

SFN-1200-36T

Electric Tapping Machine

B



SFN-1000-16T

SFN-1200-36T



3-Arm Model

Features

1. With imported PLC components including modules, chips and capacitors, new design of the machine makes it perform better on oil and dust proof.
2. With high strength aluminum alloy construction and strong hardness, the machine works more stable and durable.
3. Two-button operation to satisfy advance and retreat mode, down key advances, up key retreats; Touch screen with plastic cover to be protected from being damaged.
4. It is easier to operate with the touch screen display interface becoming conciser and more multi-functional, such as the "Actual Depth" on the screen can monitor the real-time tapping depth automatically, and the "Pre-set Parameter Select Storage" can help users save time by reserving working parameters.

Specifications

Model	SFN-1000-10T	SFN-1000-12T	SFN-1000-16T	SFN-1200-24T	SFN-1200-30T	SFN-1200-36T
Power	220V/110V AC, 50HZ, 600W			220V/110V AC, 50HZ, 1200W		
Tapping Capacity	M3-M10	M3-M12	M3-M16	M6-M24	M6-M30	M6-M36
Highest Speed	1000rpm	625rpm	312rpm	200rpm	200rpm	156rpm
Max. Work Radius	1100mm (3-Arm: 1500mm)			1200mm (3-Arm: 1700mm)		
Vertical Extension	550mm			600mm		
Tapping Direction	Universal Direction			Universal Direction		
Package Size	710*610*230mm			810*760*250mm		
Gross Weight	30kg / 3-Arm: 38kg	30kg / 3-Arm: 38kg	30kg / 3-Arm: 38kg	48kg / 3-Arm: 60kg	50kg / 3-Arm: 62kg	50kg / 3-Arm: 62kg
Standard Collet	GT12, M3-M10	GT12, M3-M12	GT12, M3-M16	GT24, M6-M24	GT24, M6-M30	GT24, M6-M36
Optional Collet	DIN371/376, ISO, JIS or other standard collets optional					

SFN-1300-48T

Electric Tapping Machine

B



Features

1. Servo drive controller with intelligent torque production and high definition touch screen makes it easy to operate, while its compact and durable design ensures long-lasting performance.
2. HD Touch Screen makes the operation much more convenient and flexible, can from work vertical and universal direction to complicated and cumbersome work, positioning rapidly and process accurately.
3. Manual, automatic and deep hole modes for increased flexibility and convenience to allow the user to select the most appropriate method for the task.
4. Adjustment of thread size, speed, pitch and cutting depth via touch screen on swivel arm.
5. Offers variable speed settings to accommodate different materials (steel, aluminum, plastic, etc.) and tap sizes.

Specifications

Model	SF-1300-48	
Power	220V /110V, 50HZ, 1200W	220V /110V, 50HZ, 1200W
Tapping Capacity	M16-M48	M16-M48
Highest Speed	50rpm(single speed)	50rpm/200rpm(double speed)
Max. Work Radius	1300mm	1300mm
Vertical Extension	600mm	600mm
Tapping Direction	Universal	Universal
Package Size	930*930*350mm	930*930*350mm
Gross Weight	110kg	110kg
Standard Collet	GT24, 16-M36 GT48, M39-M48	
Optional Collet	DIN371/376, ISO, JIS or other standard collets optional	

SFN-1000-12DT

Electric Drilling & Tapping Machine

B



Features

1. This integrated drilling and tapping machine is equipped with an innovative system developed with an articulated swing arm and magnetic chuck lifting rod, which makes it stay perpendicular to the workpiece and ensure the smoothness of up/down sliding.
2. The machine is designed with a technology that can provide smooth and quick placements, ensuring rigidity and precision during machining operations.
3. With an intelligent touch-screen operator interface, easy and intuitive, you can perform drilling and tapping, to set quota without the need of manually tracking.
4. With the new control system, the production efficiency has been improved 5-10 times compared with traditional machines.

Specifications

Model	SFN-1000-12DT	SFN-1200-20DT
Power	220V/110V, 50HZ, 600W	220V/110V, 50HZ, 1200W
Tapping Capacity	M3-M12	M6-M20
Drilling Range	Φ1-Φ12	Φ3-Φ20
Highest Speed	625rpm	500rpm
Max. Work Radius	1100mm	1200mm
Vertical Extension	600mm	600mm
Package Size/Weight	710*610*230mm/35kg	810*760*250mm/55kg
Work Direction	Vertical	Vertical
Tapping Collet	GT12, M3-M12	GT24, M6-M20
Optional Collet	DIN371/376, ISO, JIS or other standard collets optional	

SFC-1000-16BL

Automatic Scrap Blowing & Lubricating Tapping Machine

C



Features

1. Intelligent control system with compact design mist and air pump saves space and cost greatly, and makes the operation more accurate.
2. Allows the operator to mist or lubricate the tap at their discretion, as air and mist valve are adjustable via touch screen
3. Articulated joint design nozzles are easy to be adjusted to any directions.
4. It is easier to operate with the touch screen display interface becoming conciser and more multi-functional, such as the "Actual Depth" on the screen can monitor the real-time tapping depth automatically, and the "Pre-set Parameter Select Storage" can help users save time by reserving working parameters.

Specifications

Model	SFC-1000-10BL	SFC-1000-12BL	SFC-1000-16BL	SFC-1200-24BL	SFC-1200-30BL	SFC-1200-36BL
Power	220V/110V AC, 50HZ, 600W			220V/110V AC, 50HZ, 1200W		
Tapping Capacity	M3-M10	M3-M12	M3-M16	M6-M24	M6-M30	M6-M36
Max. Work Radius	1100mm	1100mm	1100mm	1200mm	1200mm	1200mm
Highest Speed	1000rpm	625rpm	312rpm	200rpm	200rpm	156rpm
Tapping Direction	Universal Direction					
Mist Spraying Time	0.1-25s Adjustable					
Air Blowing Time	No Limit					
Gross Weight	30kg	30kg	30kg	48kg	50kg	50kg
Standard Collet	GT12, M3-M10	GT12, M3-M12	GT12, M3-M16	GT24, M6-M24	GT24, M6-M30	GT24, M6-M36
Optional Collet	DIN371/376, ISO, JIS or other standard collets optional					

SFD-1000-16BL

Automatic Blowing & Lubricating Tapping Machine with Built-in Oil Tank

D



Features

1. Patented design machine structure, built-in oil tank, head can be swiveled from 0 to 90 degrees easily.
2. Programmable blowing and lubricating function (requires external compressed air source with 6-8 bar operating pressure).
3. Adjustment of thread size, speed, pitch and cutting depth via touchscreen on the swivel arm.
4. Storage of work parameters for repeatable and faster processing of workpieces.
5. Right/left rotation selectable on the machine head.
6. Quick-change Tapping Collet with slip clutch for safe thread cutting without risk of breakage.
7. Manual mode: Once the set cutting depth has been reached, the spindle will stop automatically, forward and reverse travel must be activated manually.
8. Automatic mode: Once the set cutting depth has been reached, the machine switches from forward to reverse mode automatically.

Specifications

Model	SFD-1000-10BL	SFD-1000-12BL	SFD-1000-16BL	SFD-1200-24BL	SFD-1200-30BL	SFD-1200-36BL
Power	220V/110V AC, 50HZ, 600W			220V/110V AC, 50HZ, 1200W		
Tapping Capacity	M3-M10	M3-M12	M3-M16	M6-M24	M6-M30	M6-M36
Highest Speed	1000rpm	625rpm	312rpm	200rpm	200rpm	156rpm
Max. Work Radius	1100mm (3-Arm: 1500mm)			1200mm (3-Arm: 1700mm)		
Air Blowing Time	No Limit			No Limit		
Mist Spraying Time	0.1-25s Adjustable			0.1-25s Adjustable		
Tapping Direction	Universal Direction			Universal Direction		
Package Size	710*690*230mm			880*790*250mm		
Weight	30kg/3-Arm: 38kg	30kg/3-Arm: 38kg	30kg/3-Arm: 38kg	48kg/3-Arm: 60kg	50kg/3-Arm: 62kg	50kg/3-Arm: 62kg
Standard Collet	GT12, M3-M10	GT12, M3-M12	GT12, M3-M16	GT24, M6-M24	GT24, M6-M30	GT24, M6-M36
Optional Collet	DIN371/376, ISO, JIS or other standard collets optional					

Upgraded Configuration



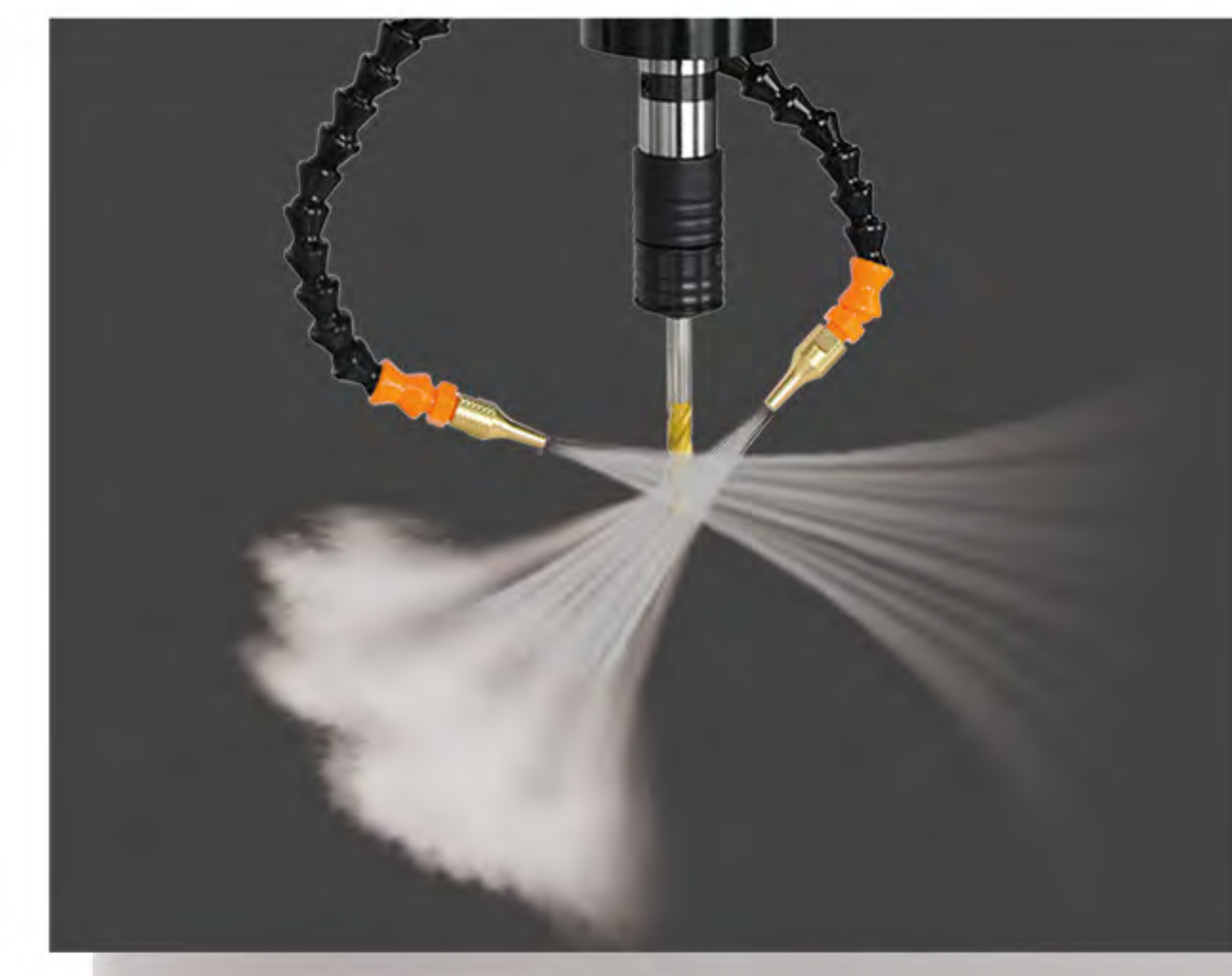
- Built-in oil tank makes it easier to operate.
- Compact design takes less space.
- Special design increases the flexibility.

Intelligent Tapping Machine System



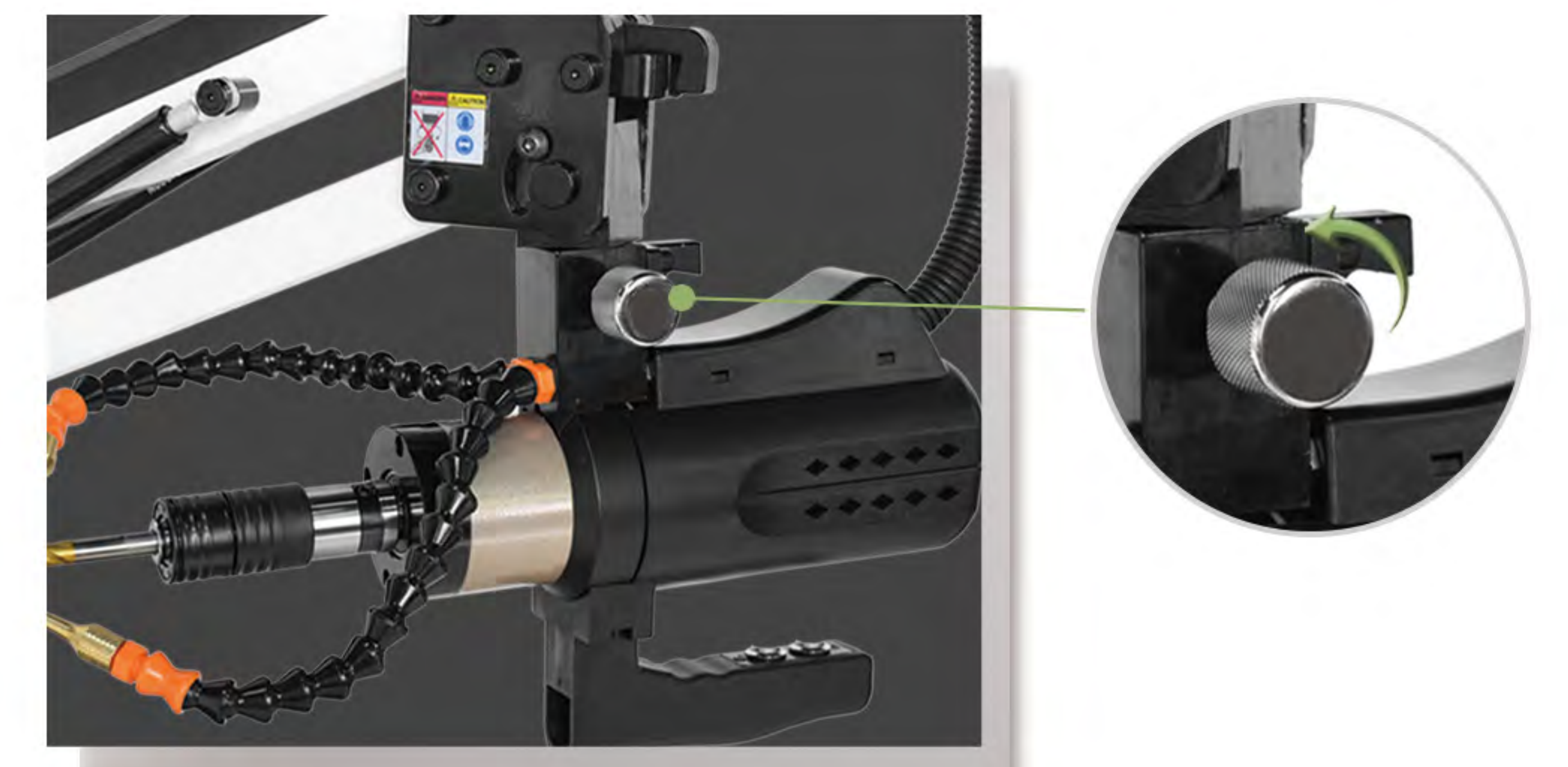
- 4.3 inch HD touch screen with protective cover for dust proof
- Real-time torque display
- Full-featured functions
- Easy to set various parameters

Air Blowing & Mist Spray System



- Mist spray and air blowing can be controlled separately by the system, they can be opened together or separately.
- The pipes are hidden inside. Instantaneous spray technology has solved the problem of delayed spray, to realize instant spray by pressing tapping switch.

Easily Switch Between Vertical and Universal



- The modes between vertical and universal can be easily switched by simple operation, just press a switch and do not need tools and wrenches.

Upgraded Package



Size: 730(L)*710(W)*230(H)mm
900(L)*800(W)*250(H)mm



Tapping Collet



Base



Tapping Oil



Power Cord

- Inner shaped foam make it appropriate to accomodate the machine parts for safe shipment.
- Outer wooden box package makes it more stable for air or long-time sea shipment.

SF-Q100

Handheld Curved & Linear Pneumatic Chamfering Machine



■ Features

1. With the main components imported from Japan, the stability and durability of machines have been improved even under ultra-high speed.
2. Easy to carry with compact and lightweight design, and more handy with facility during working.
3. Inner holes, outer holes, 40° angles and other complex workpieces can be chamfered, to make up the works that common machines could not realize.
4. Adjustment of spindle speed can be controlled easily via adjusting the intake air pressure.
5. Vibration can be reduced and degree of surface finish can be improved by its multiple blades and excellent work speed.
6. Suitable for a variety of chamfering materials including steel, aluminum, plastic and others.
7. With the shank/cutter head become sealed, safety factor has been improved effectively during operating.
8. Available to chamfer both linear and curvilinear workpieces with the removal metal block.

■ Specifications

Model	Chamfering Depth	Air Pressure	Work Speed	Smooth Degree	Chamfering Angle	Net Weight
SF-Q100	0-3mm	6-8kg/cm ²	13000rpm	N3 if no abrasion on blade	45°	1.6kg

SF-100

Handheld Curved Electric Chamfering Machine



■ Features

1. Used to chamfer the irregular surface of inner or outer circles.
2. Applicable for processing inverted angle on curved edge of large workpieces, while some other machine could not do that.
3. Easy to operate with compact and lightweight design to cause less fatigue work.
4. Equipped with 2 blades that makes cutting process smoothly and improves work efficiency greatly.
5. Dual-purpose blade switch on the machine becomes more functional, that can process both 45° and R angle.



■ Specifications

Model	Voltage/Power	Chamfering Depth	Work Speed	Current	Chamfering Angle	Net Weight
SF-100	220V/720W	0-3mm	10000rpm	3.0A	45°	5kg

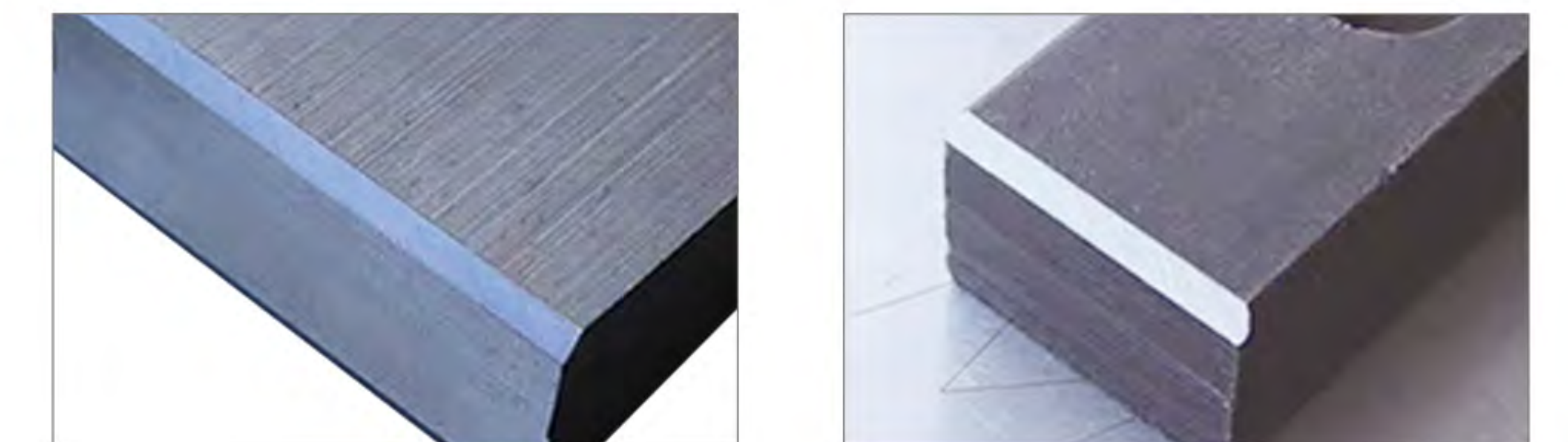
SF-120

Handheld Linear Electric Chamfering Machine



■ Features

1. Used for large machine tools, mould processing, ship buildings, tailer -made chamfering machines.
2. Main body of the machine conforms to the principles of ergonomics, which makes operation become easier, faster and more efficient.
3. Knife disc designed by international advanced end-milling method makes the work efficiency be improved ten times compared with ordinary machines.



■ Specifications

Model	Voltage/Power	Chamfering Depth	Work Speed	Current	Chamfering Angle	Net Weight
SF-120	220V/720W	0-3mm	10000rpm	3.0A	45°	5.1kg

SF-140

Handheld Linear Roll-ball Chamfering Machine



■ Features

1. Used for large machine tools, mould processing, ship buildings, tailer -made chamfering machines.
2. Main body of the machine conforms to the principles of ergonomics, which makes operation become easier, faster and more efficient.
3. Knife disc designed by international advanced end-milling method makes the work efficiency be improved ten times compared with ordinary machines.
4. Pulley device on chamfering panel can be operated easily and reduces friction.



■ Specifications

Model	Voltage/Power	Chamfering Depth	Work Speed	Current	Chamfering Angle	Net Weight
SF-140	220V/710W	0-5mm	10000rpm	6.7A	45°	4.5kg

SF-400YH

High Speed Circular Chamfering Machine



■ Features

1. Widely used to chamfer for mould processing, machine tools manufacturing, valve manufacturing, hardware machinery, hydraulic parts and textile machinery, or to deburr the surface of workpieces.
2. Chamfering depth is from 0mm up to 3mm, or adjustable.
3. With hard chrome electroplating, the plate is more durable and rustproof.
4. It is easy and yare to adjust without any clamps, thus the efficiency has been improved 10-20 times compared with traditional machines.

■ Specifications

Model	SF-400YH
Power	380V-1100W-50HZ
Chamfering Depth	0-3mm
Work Speed	9000rpm
Smooth Degree	N5 if no abrasion on blade
Package Size/Weight	360*420*430mm/30kg
Chamfering Angle	45°

SF-500DG

High Speed Linear Guide Chamfering Machine



■ Features

1. Suitable for various machinery and mould workpieces.
2. This linear chamfering machine has realized "zero" scratch on processed copper or aluminum workpiece with the special "Roll-Ball" design.
3. It is also available to change the current blade to user's previous lathe blade.
4. Chamfering depth is from 0mm up to 5mm, or adjustable.
5. With hard chrome electroplating, the plate is more durable and rustproof.
6. It is easy and yare to adjust without any clamps, thus the efficiency has been improved 10-20 times compared with traditional machines.

■ Specifications

Model	SF-500DG
Power	380V-1100W-50HZ
Chamfering Depth	0-5mm
Work Speed	9000rpm
Smooth Degree	N5 if no abrasion on blade
Package Size/Weight	570*420*500mm/45kg
Chamfering Angle	45°

SF-900LY

High Speed Combined Chamfering Machine



■ Features

1. Widely used in die processing, machine tool manufacturing, valve manufacturing, hydraulic parts, etc. for removing burrs on flat and other parts.
2. Straight line, arc shape (such as cylindrical, inner hole, waist shape) and irregular edges of inner and outer cavity can be chamfered with one machine.
3. V-groove chamfering does not require clamping.
4. Hard chrome working surfaces are durable and anti-corrosion.
5. High-speed milling head ensures precise, smooth and efficient chamfering.

■ Specifications

Model	SF-900LY
Power	380V-1100W-50HZ
Chamfering Depth	Straight: 0-5mm, Circular: 0-3mm
Work Speed	9000rpm
Smooth Degree	N5 if no abrasion on blade
Package Size/Weight	400*490*530mm/48kg
Chamfering Angle	30°- 45°
Work Panel Length	Straight: 350mm, Circular: 250mm

SF-900DG

High Speed Combined Linear Guide Chamfering Machine



■ Features

1. Widely used in die processing, machine tool manufacturing, valve manufacturing, hydraulic parts, etc. for removing burrs on flat and other parts.
2. Straight line, arc shape (such as cylindrical, inner hole, waist shape) and irregular edges of inner and outer cavity can be chamfered with one machine.
3. V-groove chamfering does not require clamping.
4. Hard chrome working surfaces are durable and anti-corrosion.
5. Guide rail ensures no scratches on the workpieces of various materials such as steel, stainless steel, aluminum alloy, copper, acrylic and cardboard.
6. High-speed milling head ensures precise, smooth and efficient chamfering.

■ Specifications

Model	SF-900DG
Power	380V-1100W-50HZ
Chamfering Depth	Straight: 0-5mm, Circular: 0-3mm
Work Speed	9000rpm
Smooth Degree	N5 if no abrasion on blade
Net Weight	570*490*540mm/48kg
Chamfering Angle	45°
Work Panel Length	Straight: 500mm, Circular: 250mm

SF-U5

Automatic Industrial Sharpening Machine



■ Features

1. Automatic sharpening machine can be used for various tools, including milling cutter, drill bit, round-nose milling cutter and spherical milling cutter.
2. It's easy and flexible to operate, and also portable to carry.
3. Work efficiency has been improved greatly by simplifying the traditional grinding method.

■ Specifications

Model	SF-U5
Power	220V/2.6KW
Grinding Range	3-20mm
Work Speed	3000rpm
Smooth Degree	N5 if no abrasion on blade
Grinding Wheel	SDC standard 1 set
Milling Cutter Blades	2 edges, 3 edges, 4 edges
Grinding Efficiency	1-2min/pc
Package Size/Weight	860*670*1600mm/131kg

SF-GD13

Drill Bit Grinder



■ Specifications

Model	SF-GD13
Power	220V/120W 50/60Hz
Collet Standard	ER20
Grinding Range	Φ3-Φ13mm
Work Speed	4400rpm
Tip Angle	90°-140°
Grinding Wheel	CBN(for HSS)*1, (SDC for Carbide optional)
Package Size	36*21*19cm
Weight	9kg

■ Features

1. With accurate and fast grinding process, this professional drill bit grinder does not require special skills.
2. Compact and practical design makes it easy to transport.
3. With a center point sharpening function, it extends the life of the drill bit.
4. Clean, fast and well done work.
5. Equipped with the combined design, it can sharpen top angle, front cutting edge, end edge.

SF-GD30

Drill Bit Grinder



■ Specifications

Model	SF-GD30
Power	220V/450W 50/60Hz
Collet Standard	ER40
Grinding Range	Φ13-Φ30mm
Work Speed	4400rpm
Tip Angle	95°-140°
Grinding Wheel	CBN(for HSS)*1, (SDC for Carbide optional)
Package Size	43*23*21cm
Weight	25kg

■ Features

1. With accurate and fast grinding process, this professional drill bit grinder does not require special skills.
2. Compact and practical design makes it easy to transport.
3. With a center point sharpening function, it extends the life of the drill bit.
4. Clean, fast and well done work.
5. Equipped with the combined design, it can sharpen top angle, front cutting edge, end edge.

SF-430

Drill Bit Grinder



Specifications

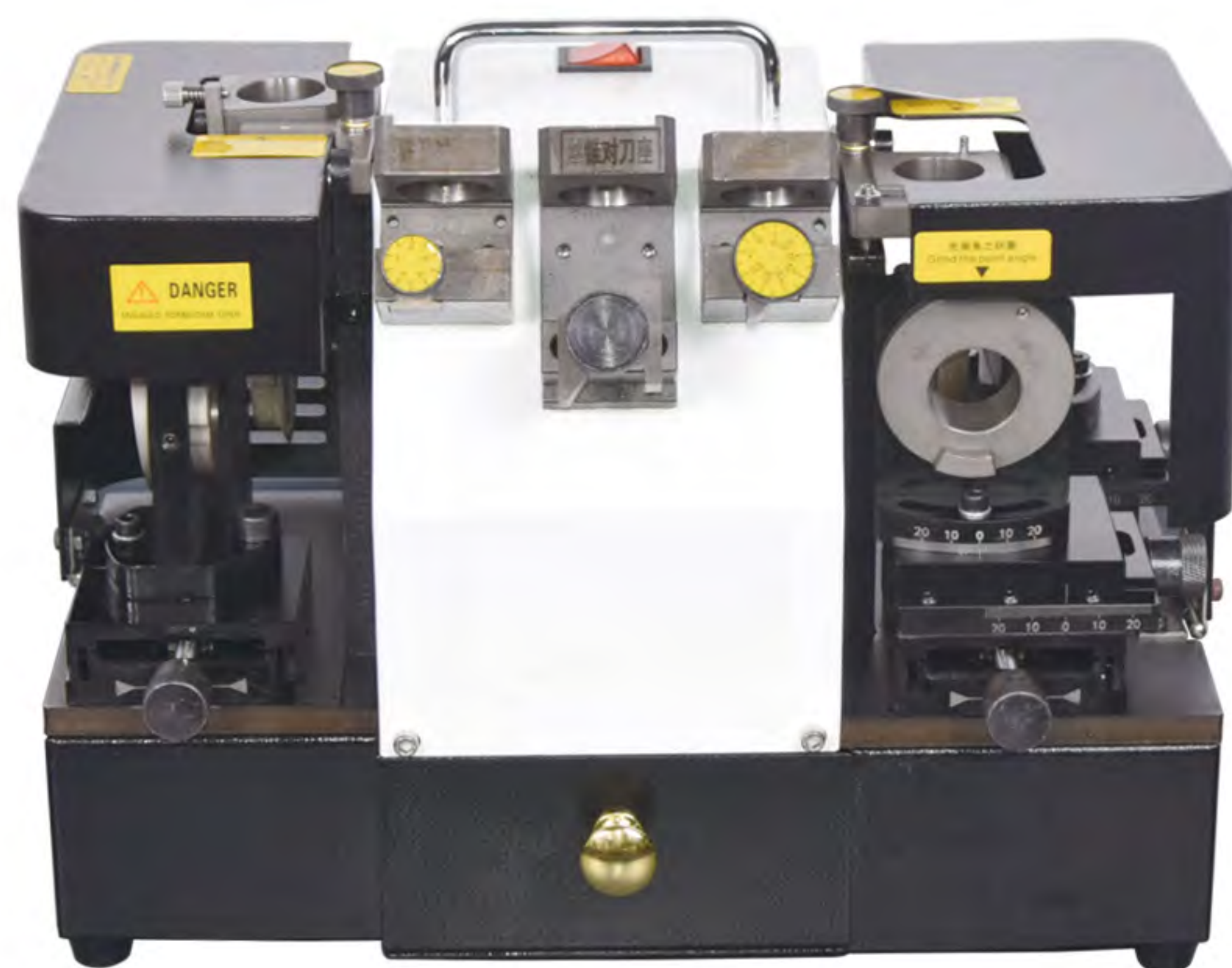
Model	SF-430
Power	220V 50/60Hz 500W
Grinding Range	Φ3-Φ30mm
Work Speed	5300rpm
Angle	90°~135°
Grinding Wheel	CBN(for HSS)*2, (SDC for Carbide optional)
Package Size	450*350*400mm
Net/Gross Weight	37/40kg

Features

1. Equipped with 3-30mm CBN or SDC wheels, it can grind milling cutters of 2, 3, 4, 6 edges.
2. CBN wheel is for HSS tools or materials, while SDC is for carbide materials.
3. Cutting edges of the drill bit are clamped in the collet in a precise position, and introduced into the sharpening opening in a predetermined order.
4. Blade edges are sharpened by small rotational movements of the collet holder.
5. With a center point sharpening function, it extends the life of the drill bit.
6. Clean, fast and well done work.

SF-313C

End Mill and Drill Bit Grinder



Specifications

Model	SF-313C
Power	220V 50/60HZ 500W
Work Speed	4500rpm
Grinding Range	Φ3 ~ Φ13mm
Blade	2 edges, 3 edges, 4 edges, 6 edges
Tip Angle	Drill bit: 90° ~ 145°, End Mill 0° ~ 5°
Grinding Object	Drill bit, End mill
Blade Material	Tungsten Steel
Package Size	380*245*250mm
Net/Gross Weight	25/27kg

Features

1. Grinding wheel of 3~13mm is suitable for flat sharpening HSS, 2~13mm is for hard metal spiral drill bits.
2. Cutting edges of the drill bit are clamped in the collet in a precise position, and introduced into the sharpening opening in a predetermined order.
3. Blade edges are sharpened by small rotational movements of the collet holder.
4. Equipped with 3-13mm blades, it can grind milling cutters of 2, 3, 4, 6 edges.
5. With a center point sharpening function, it extends the life of the drill bit.

SF-U2

Universal Cutter Grinder



Specifications

Model	SF-U2	SF-U3
Power	380V/220V, 50/60Hz, 0.37KW	
Work Speed	5200rpm	5200rpm
Clamping Diameter	Φ3 ~ Φ16mm	Φ3 ~ Φ28mm
Tool Holder Travel	140mm	140mm
Fine Adjustment of Tool Holder	18mm	18mm
Taper Angle	0° ~ 100°	0° ~ 100°
Negative Taper Angle	0° ~ 20°	0° ~ 20°
Relief Angle	0° ~ 25°	0° ~ 25°
Grinding Wheel	SDC standard*1, Hole Diameter: 20mm	
Package Size/Weight	555*450*430mm/52kg	555*445*425mm/56kg

Features

1. Widely used in die processing, machine tool manufacturing, valve manufacturing, computer engraving.
2. Applicable for different tools with various diameters and angles, of milling cutter, dividing machines, marking machines, etc.
3. Straight, arc shape (such as cylindrical, inner hole, waist shape) and irregular edges of inner and outer cavity can be shaped.
4. Compact and practical design makes it easy to transport.

SF-EG12

Universal Milling Cutter Grinding Machine



Specifications

Model	SF-EG12	SF-EG20
Power	220V/400W 50/60HZ	220V/600W 50/60HZ
Work Speed	7000rpm	7000rpm
Grinding Range	Φ3 ~ Φ12mm	Φ4 ~ Φ20mm
Grinding Wheel	SDC standard*1, CBN optional	
Package Size	420*360*380mm	
Weight	12kg	18kg

Features

1. Due to its high hardness of grinding wheel, it is widely used for materials of tungsten steel and hard alloy steel, thus makes it work in a very long life span without any fixation and maintenance.
2. Grinding, drilling, cutting, milling process of end mills can be done at the same time, which eliminates the complex drilling process, and saves time, human labor, or energy.
3. With a center point sharpening function, it can grind the milling cutter in one minute with high precision.

SF-DCV130

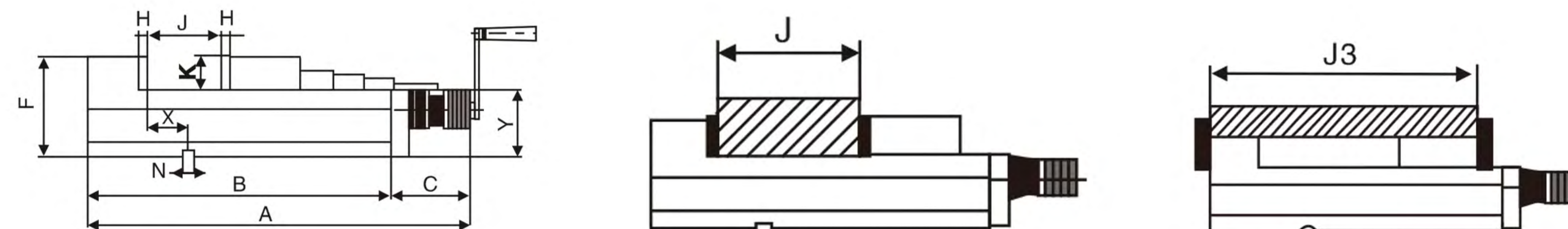
Super Precision Hydraulic CNC Milling Bench Vise

High power type omnibearing precision oil pressure vice, suitable for vertical, horizontal comprehensive cutting center, general milling machine, radial drill, planer, boring machine, and other mechanical processing area.



■ Features

1. Turbo charged vise with MC double force, that is appropriate for vertical and horizontal integrated cutting machine FMS system.
2. Design with double sided pressure makes it more precise and efficient, which saves much labor cost.
3. Main body and fixed vise's mouth are integrated together, which eliminates the suspension of plate and avoid the inclination of workpiece.
4. With the graphitized cast iron (FCD60-60kgs/mm) used on the body of the vise, its hardness can reach over 45HRC, which is suitable for heavy cutting and ensures the long-term wear resistance.



■ Specifications

Model	A	B	C	D	F	H	J	J3	K	N	X	Clamping force (kgf)	Weight
SF-DCV130	464	340	124	102	133	15	0-130	175-305	48	18	45	4000	37KG
SF-DCV180	539	415	124	130	163	15	0-180	213-393	55	18	65	4500	44KG
SF-DCV240	604	480	124	160	163	15	0-240	223-443	58	18	99	4500	53KG
SF-DCV340	734	610	124	200	190	15	0-340	230-570	70	18	70	5000	84KG

SF-QH80

High Precision Rotatable CNC Milling Bench Vise



■ Features

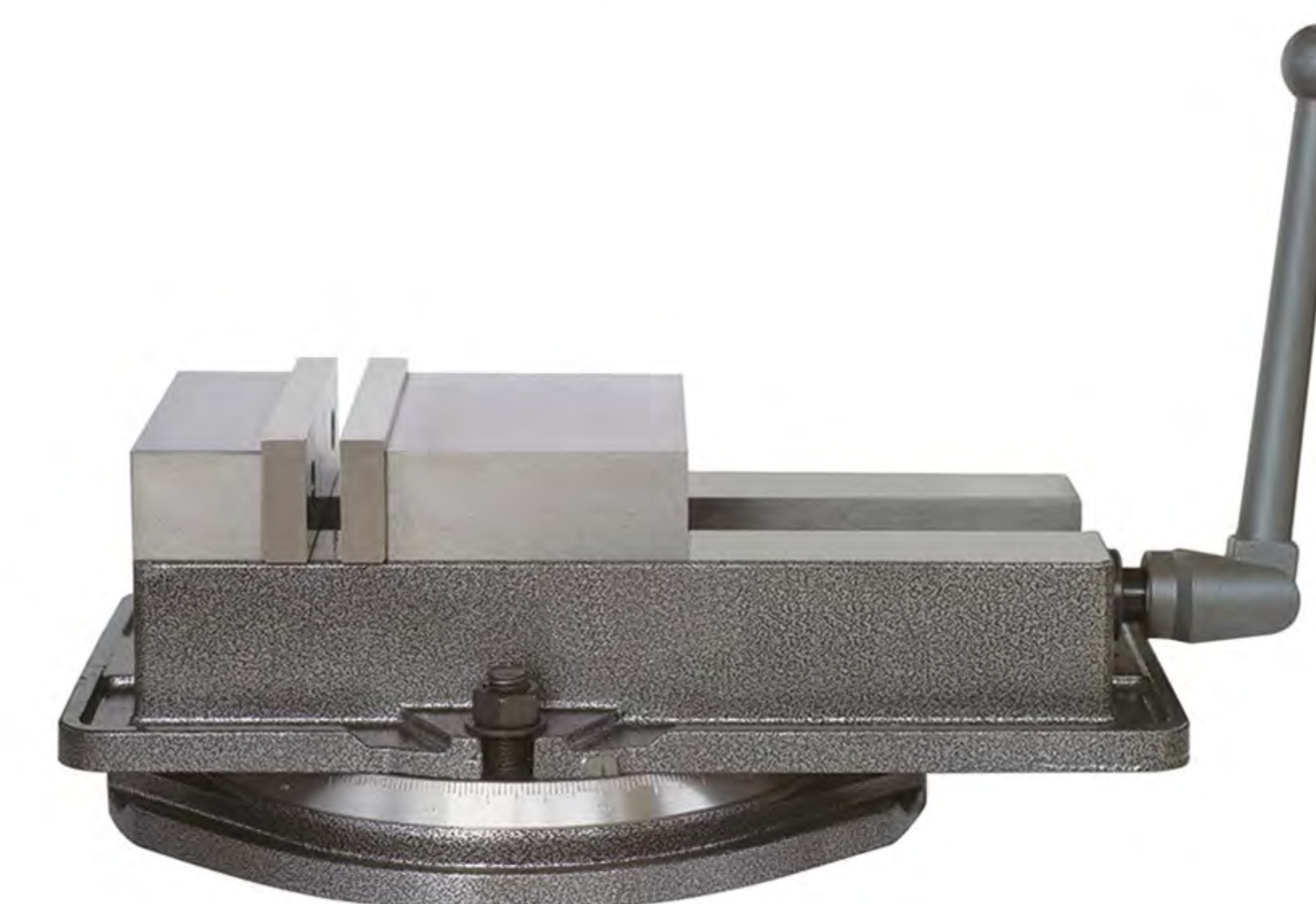
1. Widely used for iron beds, drilling machines to process plate, groove, angle, hole, etc.
2. Parallelism and perpendicularity of two faces on two jaws are less than 0.025mm/100mm.

■ Specifications

Model	SF-QH80	SF-QH100	SF-QH125	SF-QH160	SF-QH200
Width of Jaw(mm)	80	100	125	160	200
Height of Jaw(mm)	30	35	40	52	63
Max. Opening(mm)	60	75	95	120	150
Net/Gross Weight	5.7/6kg	8/8.5kg	14/15kg	28/29kg	38/39kg
Package Size	49x25x12cm(4pcs/box)	28x14x13cm	32x18x14cm	43x23x18cm	47x27x19cm

SF-QM100

High Precision Rotatable CNC Milling Bench Vise



■ Features

1. Mainly used for milling and drilling machines.
2. Parallelism and perpendicularity of two faces on two jaws are less than 0.025mm/100mm.
3. When the jaw moves horizontally, the spherical base will have a download pressure vertically to stabilize the clamped workpiece.
4. Opening degree of the jaws can be adjusted to 4 directions by request.



■ Specifications

Model	SF-QM100	SF-QM125	SF-QM160	SF-QM160L	SF-QM200
Width of Jaw(mm)	100	125	160	160	200
Height of Jaw(mm)	32	40	45	45	50
Max. Opening(mm)	100	125	170	200	230
Net/Gross Weight	13/14kg	20/21kg	30/31kg	31/32kg	47/48kg
Package Size	36x24x14cm(4pcs/box)	42x27x15cm	45x31x18cm	49x31x17cm	56x35x20cm

SF-QMG100

Super Precision CNC Milling Bench Vise



■ Features

1. Mainly used for milling and drilling machines.
2. Parallelism and perpendicularity of two faces on two jaws are less than 0.025mm/100mm.
3. Applicable for single or multiple unit.
4. Clamp of angle fixture ensures the stability of workpiece.

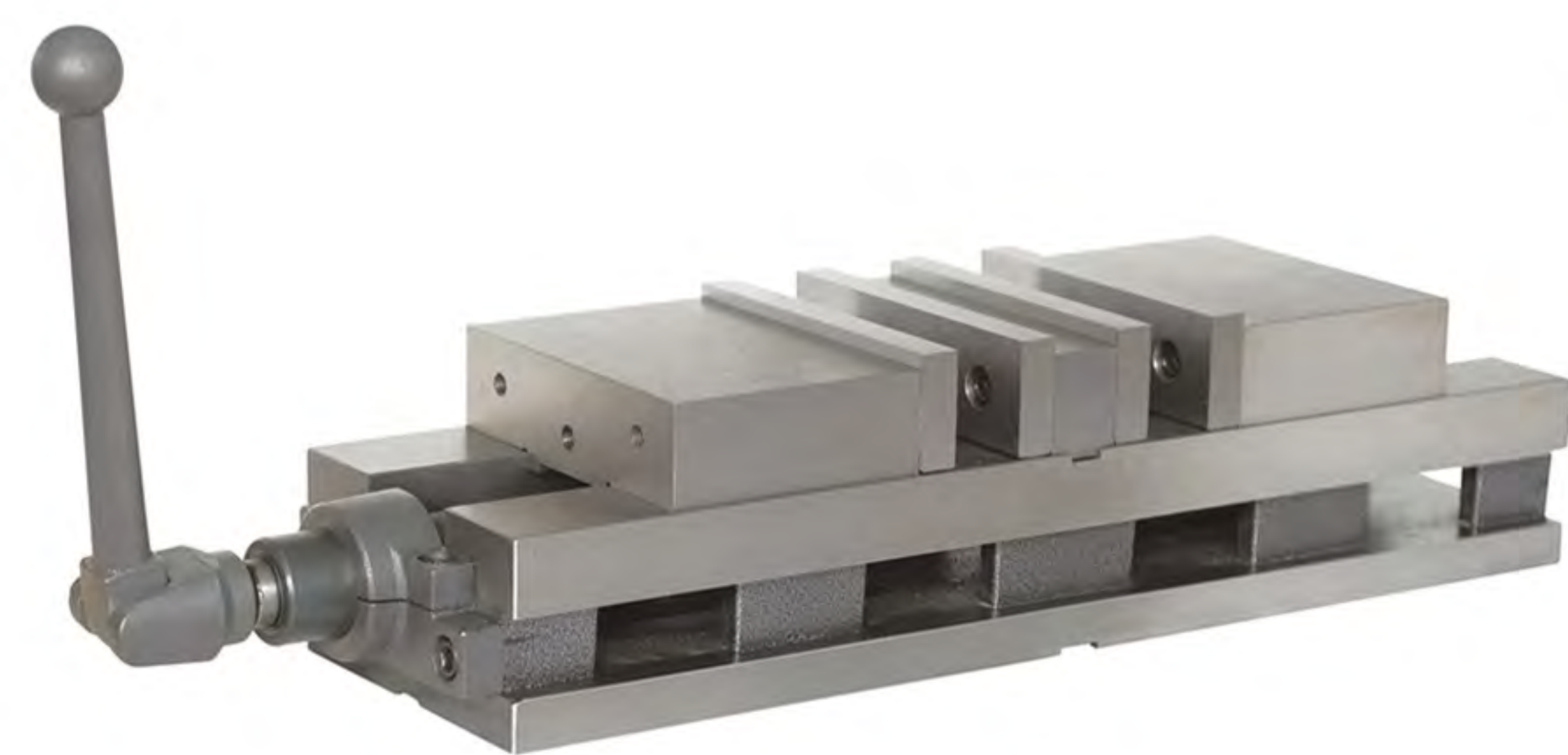


■ Specifications

Model	SF-QMG100	SF-QMG160
Width of Jaw(mm)	100	160
Height of Jaw(mm)	32	45
Max. Opening(mm)	100	200
Net/Gross Weight	8/9kg	23/24kg
Package Size	33x11x11cm	45x18x14cm

SF-SX100

Super Precision Bi-directional CNC Milling Bench Vise



■ Features

1. Mainly used for milling and drilling machines.
2. Parallelism and perpendicularity of two faces on two jaws are less than 0.025mm/100mm.
3. Applicable for single or multiple unit.
4. Clamp of angle fixture ensures the stability of workpiece.
5. Two positions to accommodate two workpieces make it possible to hold the same or different clamps at the same time.

■ Specifications

Model	SF-SX100	SF-SX160
Width of Jaw(mm)	100	160
Height of Jaw(mm)	32	45
Max. Opening(mm)	75	95
Net/Gross Weight	14/15kg	35/36kg
Package Size	52x11x12cm	64x17x16cm

SF-QHK100

High Precision Universal Direction CNC Milling Bench Vise



■ Features

1. Widely used for iron beds, drilling machines to process plate, groove, angle, hole, etc.
2. Parallelism and perpendicularity of two faces on two jaws are less than 0.025mm/100mm.

■ Specifications

Model	SF-QHK100	SF-QHK125	SF-QHK160
Width of Jaw(mm)	100	125	160
Height of Jaw(mm)	41	46	50
Max. Opening(mm)	75	95	120
Net/Gross Weight	15/16kg	22/23kg	32/33kg
Package Size	34x20x17cm	40x24x18cm	44x26x21cm

SF-QW100

High Precision Universal Direction CNC Milling Bench Vise



■ Features

1. Widely used for mechanical, electrical or other complex processing.
2. Parallelism and perpendicularity of two faces on two jaws are less than 0.025mm/100mm.
3. With the slant structure on the silver or two-way body, it has realized the position by 3 directions or various orientations.



■ Specifications

Model	SF-QW100	SF-QW125
Width of Jaw(mm)	105	125
Height of Jaw(mm)	40	44
Max. Opening(mm)	105	120
Net/Gross Weight	24/25kg	26/27kg
Package Size	47x23x21cm	51x23x21cm

SF-S1

Portable Tap Extractor Electric Sparking EDM Machine

Processing small holes, multiple holes or taps, drill bits, screws, reamers, plug gauges and other tools, used in the hardened steel, such as cemented carbide, copper and other metal materials.



Features

1. This EDM machine is a technical tool for removing broken thread taps, processing small holes.
2. Can quickly remove taps, drill bits, screws, reamers, plug gauges and other tools or cutters that are broken in the workpieces.
3. High-speed computing chip fully guarantees the accuracy of the workpieces.
4. Button operation makes it easy to start and turn off, depth is also controllable.
5. Both motor and electric current are with overload protection for safe processing.
6. Electrode retreats automatically once fixed depth processing is settled.
7. Easy to carry with the strong hand shank.

Specifications

Model	Voltage	Power	Processing Range	Remove Tap Range	Processing Speed	Maximum Processing Depth	Net/Gross Weight	Package Size
SF-S1	220VAC	1000W	1.0-30mm	M3-M30	1.0mm/min	100mm	13/15kg	540*420*350mm

PML-2040

Permanent Magnetic Chuck



Features

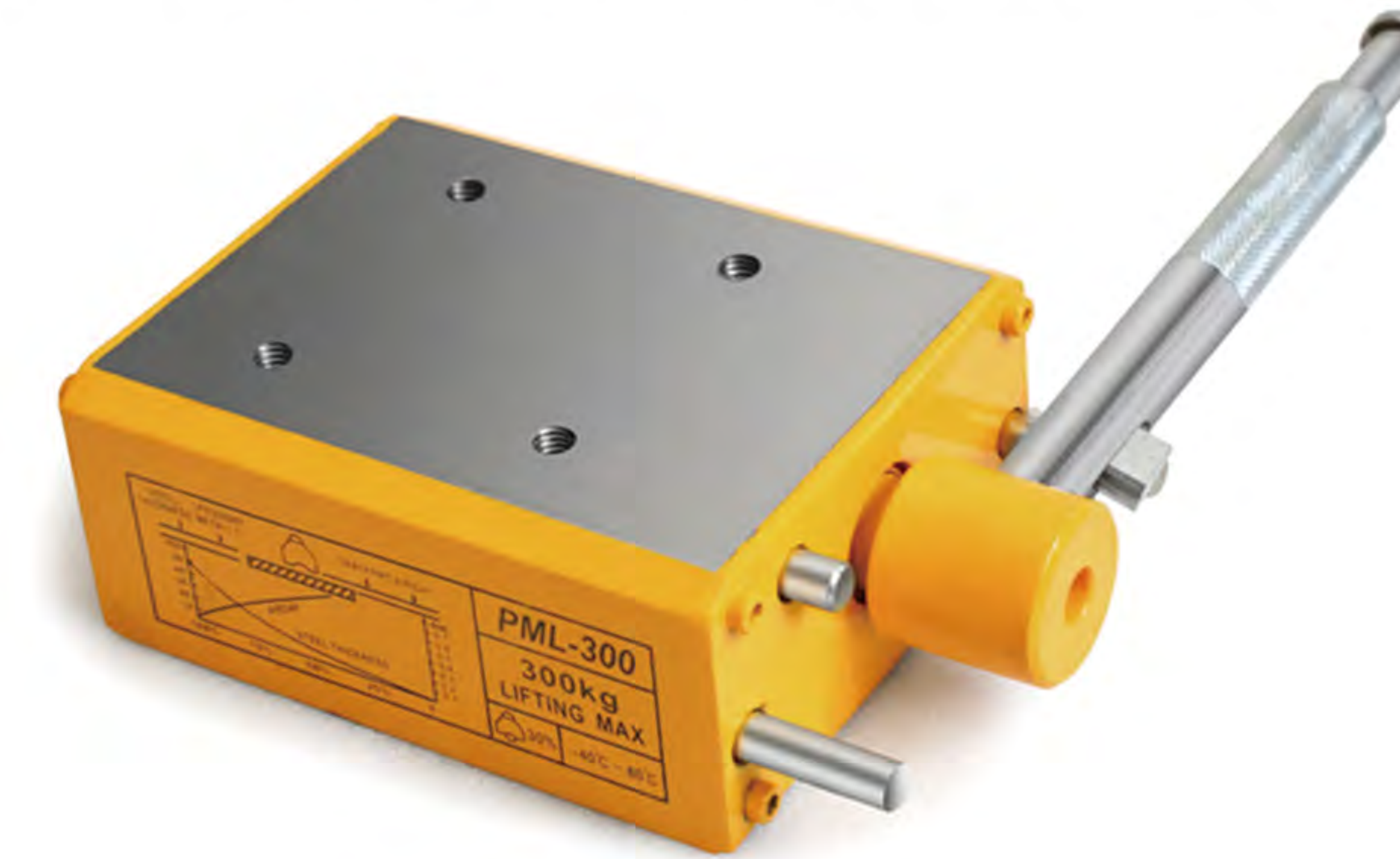
1. Suitable for powerful CNC processing machines and precision milling machines, high-speed machining centers and machining centers.
2. Does not need power supply and will not heat up even if used for a long time.
3. Fully guarantees the accuracy of the workpieces with high precision.
4. The workpiece will not move, which can avoid unnecessary losses, even if there is a sudden power outage.
5. The unique magnetic circuit design makes the suction very strong and uniform.
6. The high-performance high-quality magnetic steel can ensure that the suction is stable and unchanged for a long time.

Specifications

Model	Size(mm)			Magnetic Block	Magnetic Force Block (kgf)	Total Suction (kgf)
	A	B	H			
PML-2040	200	400	80	136	25	3400
PML-3040	300	400	90	176	25	4400
PML-4040	400	400	90	240	25	6000
PML-4050	400	500	90	300	25	7500
PML-4060	400	600	90	375	25	9375

PML-300

Permanent Magnetic Base



Features

1. Typically used to mount the tapping machine on metal materials or workbenches.
2. To be fixed on a stable and sturdy base without electricity.
3. Quickly and conveniently fixed to any surface made of steel and cast iron.
4. Equipped with a magnetic circuit based on neodymium magnets with an M10 mounting hole.
5. Easy to operate with handle switch, and even much safer during operation process.
6. The pull-off force of this magnetic base can reach 3.5 times higher than common chuck

Specifications

Model	Rated Capacity(kg)	Size(mm)				Maximum Pulled-Out Force(N)	Net Weight (kg)
		L	B	H	R		
PML-300	300	153	122	65	106	1200	9
PML-600	600	195	162	74	216	2400	18
PML-1000	1000	224	168	88	451	3000	48

PMC-600

Permanent Magnetic Lifter



Features

1. Mainly used to lift steel plates, blocks, press molds, etc. and load / unload in machines during handling operation.
2. The lifting device has a wide variety of uses for lifting and shifting steel by moving materials without damaging the steel surface.
3. Requiring no extra power from users, this magnetic lifter has a strong magnetic force that is designed to lift, handle and navigate large metal road plates on construction sites.
4. Simple to operate with safety button design.
5. Large and heavy workpiece can be handled safely and easily by only one operator.
6. Working conditions can be improved and working efficiency will be increased greatly.

Specifications

Model	Rated Capacity(kg)	Size(mm)					Maximum Pulled Off(N)	Cylindrical Work Limits		Net Weight (kg)
		L	B	H	R	le		Diameter	Weight	
PMC-300	300	192	92	91	150	154	900	≥60	≤100	9.6
PMC-600	600	314	120	92	216	267	1800	≥70	≤200	18
PMC-1000	1000	363	142	118	307	342	3000	≥90	≤300	37
PMC-2000	2000	482	165	164	367	420	6000	≥120	≤600	120
PMC-3000	3000	542	234	212	451	368	9000			150

SF-16A

Pneumatic Motor



SF-16A

Specifications

Model	SF-12A	SF-16A	SF-24A
Tapping Capacity	M3-M12	M3-M16	M6-M24
Air Pressure	6-8kg/cm²	6-8kg/cm²	6-8kg/cm²
No-load Speed	400rpm	250rpm	90/250rpm
Net Weight	1.7kg	2.9kg	3.7kg

SF-WB

Cast Iron Workbench



SF-WB



SF-WB-D



SF-WB-N

Specifications

Model	SF-WB	SF-WB-D	SF-WB-N
Size/Weight	800(L)*500(W)*700(H)mm/65kg	800(L)*500(W)*700(H)mm/75kg	800(L)*500(W)*700(H)mm/60kg
	900(L)*600(W)*700(H)mm/70kg	900(L)*600(W)*700(H)mm/80kg	900(L)*600(W)*700(H)mm/70kg

Height can be customized according to needs

SF-ST

Titanium Coating Screw Tap



Titanium Coating EX-POT

Performance
Chip discharge from bottom, Through-hole
Advantage
Good heat dissipation
Good through hole effect
Peculiarity
Can tap to the blind hole bottom
No chips left,chip discharge smooth
Easy to cut into the bottom
Good cutting effect
Application
Cutting a material that is continuously crimped
Through-hole processing
Inner wall with axial groove
High speed processing



Titanium Coating EX-SFT

Performance
Chip discharge from top Blind hole
Advantage
Strong cutting ability
Wide range usage
Peculiarity
Blade Angle groove
No chip block
Strong resistance to damage
Strong cutting capacity
Application
Cutting a material that is continuously curved
Blind-hole processing
Inner wall with axial groove

JIS ISO DIN

Over-load Protection Tapping Collet



GT12

GT24

Features

- Collet set that is a precision-engineered tool with overload protection clutch.
- Compatible with ISO, JIS, DIN, Inch standard.
- With quick-change design, allow for fast and easy tool changes, minimizing downtime and increasing productivity.
- High-quality materials and construction provide excellent durability and long-term performance.



Specifications

JIS		ISO		DIN	
Tapping Collet: GT12/GT24 Screw Tap: D1*D2		Tapping Collet: GT12 Screw Tap: D1*D2		Tapping Collet: GT12 371 Screw Tap: D1*D2	
M2 3.0*2.5	M2 2.5*2.0	M6-M8 6.3*5.0	M39-M42 28.0*22.4	M2 2.8*2.1	M5-M6 6.0*4.9
M3 4.0*3.2	M3 3.15*2.5	M10 8.0*6.3	M45-M48 31.5*25.0	M3 3.5*2.7	M8 8.0*6.2
M4 5.0*4.0	M4 4.0*3.15	M12 9.0*7.1		M4 4.5*3.4	M10 10.0*8.0
M5 5.5*4.5	M5 5.0*4.0	M14 11.2*9.0		M5-M6 6.0*4.9	M12 9.0*7.0
M6 6.0*4.5	M6-M8 6.3*5.0	M16 12.5*10.0		M8 8.0*6.2	M14 11.0*9.0
M8 6.2*5.0	M10 8.0*6.3	M18-M20 14.0*11.2		M10 10.0*8.0	M16 12.0*9.0
M10 7.0*5.5	M12 9.0*7.1	M22 16.0*12.5			M18 14.0*11.0
M12 8.5*6.5	M14 11.2*9.0	M24 18.0*14.0		Tapping Collet: GT12 376 Screw Tap: D1*D2	M20 16.0*12.0
M14 10.5*8.0	M16 12.5*10.0	M27-M30 20.0*16.0		M12 9.0*7.0	M22-M24 18.0*14.5
M16 12.5*10.0		M33 22.4*18.0		M14 11.0*9.0	M27 20.0*16.0
M18 14.0*11.0		M36 25.0*20.0		M16 12.0*9.0	M30 22.0*18.0
M20 15.0*12.0					M33 25.0*20.0
M22 17.0*13.0					M36 28.0*22.0
M24 19.0*15.0					
M27 20.0*15.0					
M30 23.0*17.0					
M33 25.0*19.0					
M36 28.0*21.0					

SF-TDH

External Threading Die Holder

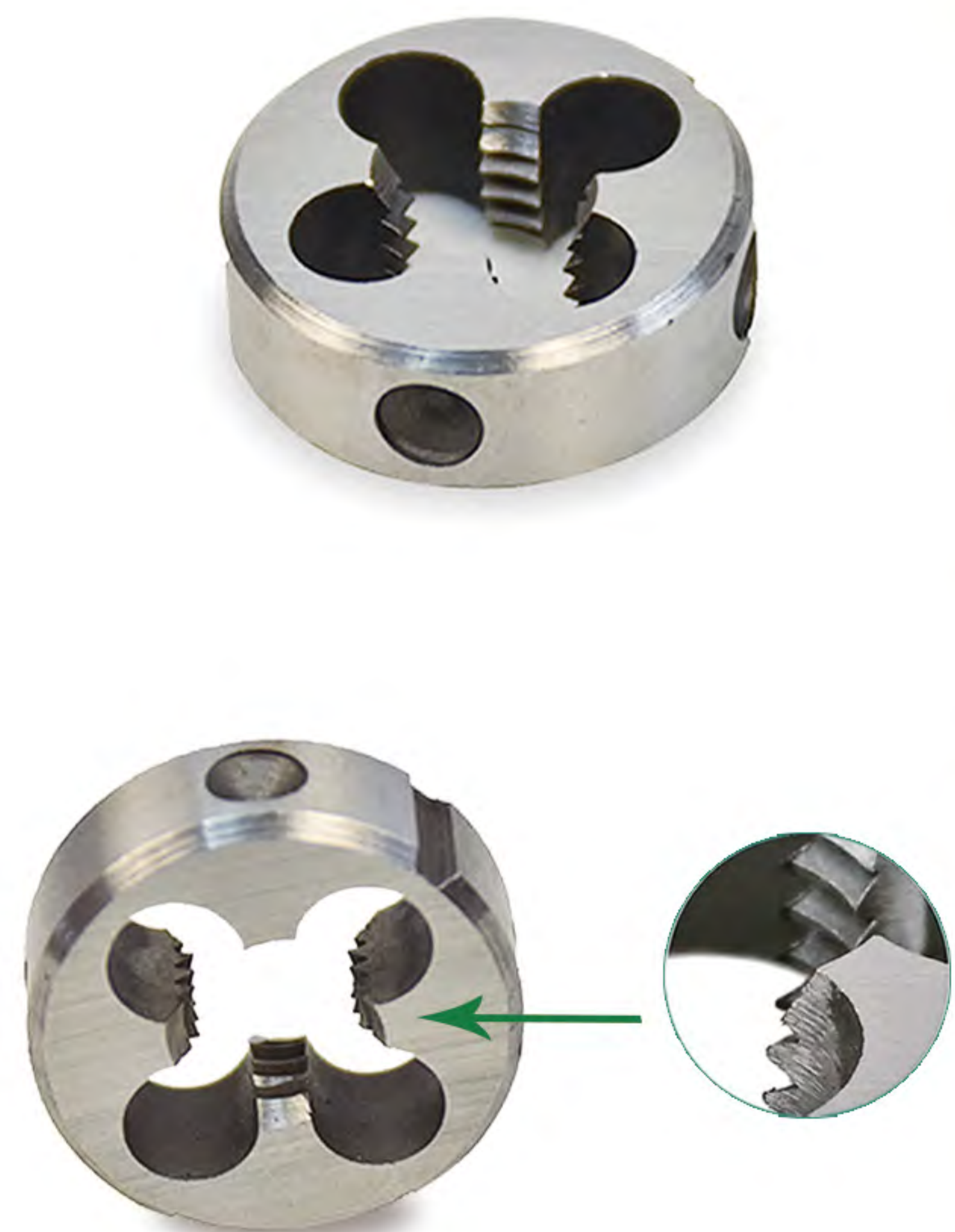


Specifications

Model	D	D1	L	d	L1	Max Threading Depth
GT12-M3~M6	19	28	45	20	3.4	45
GT12-M8	19	33	50	25	8.8	50
GT12-M10	19	38	55	30	10	50
GT12-M12~M16 Coarse	19	48	60	38	13	24
GT12-M12~M16 Fin thread	19	48	60	38	9	24
GT12-M18~M20 Coarse	19	59	85	38	9	46
GT24-M3~M6	31	30	56	20	6	56
GT24-M8	31	34	55	25	8.5	55
GT24-M10	31	40	60	30	10.5	60
GT24-M12~M16 Coarse	31	48	75	38	13	75
GT24-M12~M16 Fin thread	31	48	75	38	9	75
GT24-M18~M20 Coarse	31	59	96	45	18	96
GT24-M18~M20 Fin thread	31	59	96	45	13	96
GT24-M22~M24 Coarse	31	69	125	55	20	63
GT24-M22~M24 Fin thread	31	69	125	55	15	63
GT24-M27~M36 Coarse	31	78	130	65	25	75

SF-TD

HSS Threading Die



Specifications

Model	Thread Size/mm	Pitch/mm	Diameter/mm	Thickness/mm	Chip Hole
M3*0.5	3	0.5	20	5	3
M4*0.7	4	0.7	20	5	3
M5*0.8	5	0.8	20	7	4
M6*1	6	1	20	7	4
M8*1.25	8	1.25	25	9	4
M10*1.5	10	1.5	30	11	4
M12*1.75	12	1.75	38	14	4
M14*2	14	2	38	14	5
M16*2	16	2	38	14	5
M18*2.5	18	2.5	45	18	5
M20*2.5	20	2.5	45	18	6
M22*2.5	22	2.5	45	18	6
M24*3	24	3	55	22	6
M27*3	27	3	55	22	6
M30*3.5	30	3.5	65	26	7

SF-DP

Direction Positioner with Magnet



- GT12
- GT24
- Magnetic

SF-GW

Grinding Wheel



- Grinding Wheel for
- SF-313C, SF-430
- SF-GD13, SF-U5
- SF-GD30, SF-U2

SF-DT

Cobalt-bearing Deburring Tool



- HeadDiameter:
- 25mm, 3blades, 90°degree
- 35mm, 3blades, 90°degree
- 45mm, 3blades, 90°degree

SF-AD

Adapter



- Adapter for GT24-GT12 Chuck
- Adapter for GT48-GT24 Chuck

SF-SDC

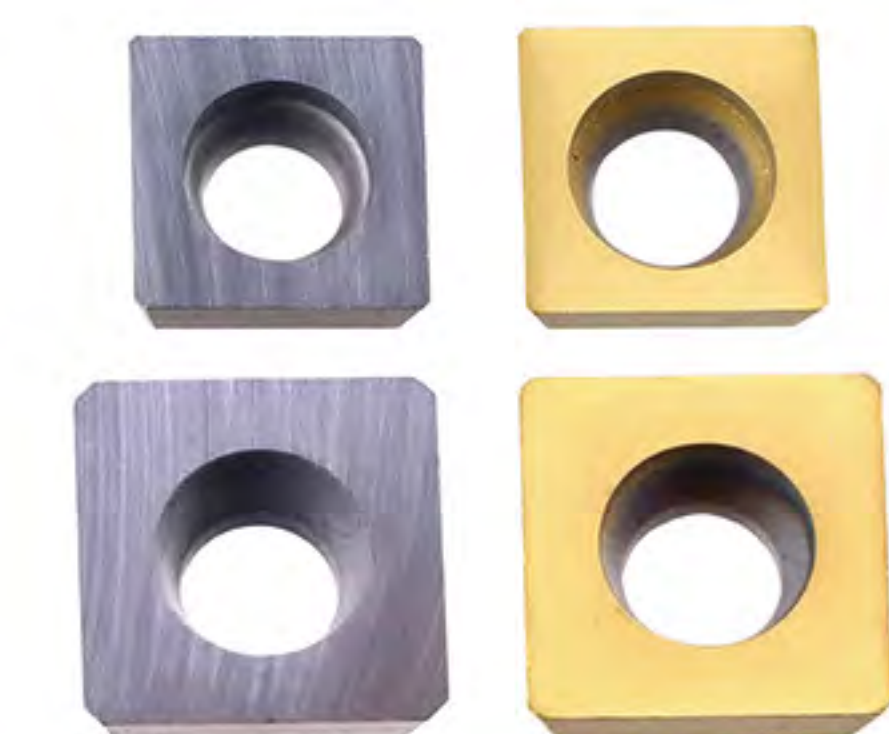
Self-Locking Drilling Chuck



- GT12 or GT24
- Self-Locking Drilling Chuck
- Drilling Range:1-16mm

SF-BLD

Chamfering Machine Insert



- Insert for Chamfering Machine

SF-DC

Drilling Chuck



- GT12 Drilling Chuck
Drilling Range:1-13mm
- GT24 Drilling Chuck
Drilling Range:3-16mm
- GT12 shank diameter 19
- GT24 shank diameter 31
- B16 Big end diameter 15.73
- B18 Big end diameter 17.78

SF-TO

Tapping Oil



- 500ml